

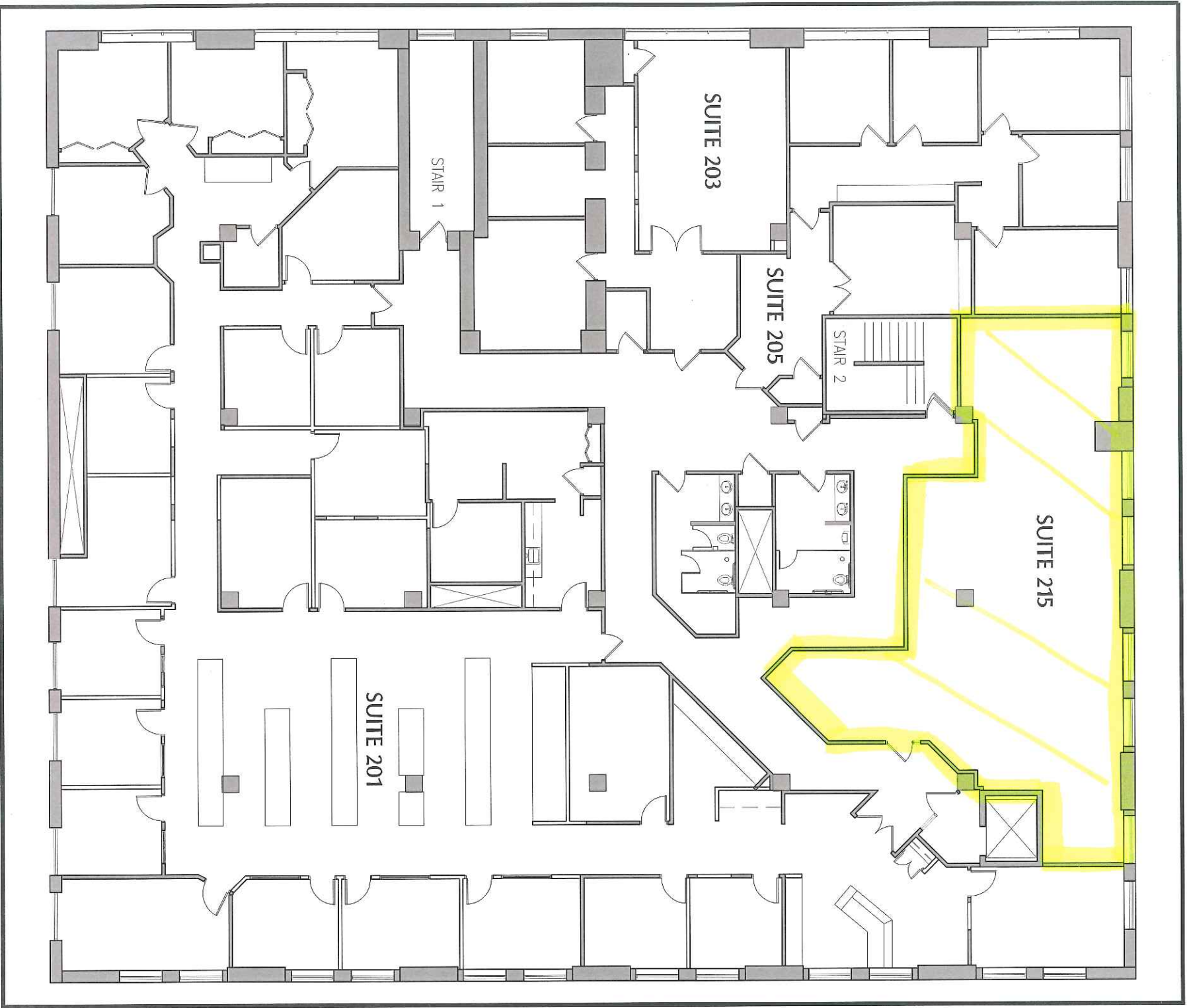
**Mohagen
Hansen
Architectural
Group**


 1000 Twelve Oaks Center Dr.
 Suite 200
 Wauzata, WI 53391
 Tel: 952.426.7400
 Fax: 952.426.7440
 www.mohagenhansen.com

SCALE:	NTS
DATE:	5-2-08
PROJECT NO.:	N/A
DESIGN BY:	E. MANNINEN
CONSULTER PATH:	233 PARK AVENUE SOUTH, SHERMAN ASSOCIATES

SHEET DESCRIPTION:
PLATE PLAN
FLOOR 2
233 PARK AVENUE SOUTH
SHERMAN ASSOCIATES

SHEET NUMBER:
1
A2.0



Mohagen Hansen Architectural Group			
1000 Twelve Oaks Center Dr. Suite 200 Wauzata, WI 53091		Tel: 952.426.7400 Fax: 952.426.7440 www.mohagenhansen.com	
SCALE:	NTS	SHEET DESCRIPTION:	
DATE:	5-2-08	PLATE PLAN FLOOR 2 233 PARK AVENUE SOUTH SHERMAN ASSOCIATES	
PROJECT NO.:	N/A	SHEET NUMBER:	
DRAWN BY:	E. MANNICHEN	1	
COMPUTER Aided:	233 PARK AVENUE SOUTH PERMITS	A2.0	