

FOR LEASE

Straus Building

350 Sibley Street
St Paul, MN 55105



95,000 SF total

Demographics

	1 Mile	3 Miles	5 Miles
Population	12,788	159,169	340,080
Households	6,555	59,633	133,738
Average HH Income	\$43,326	\$51,074	\$60,632
Daytime Population	46,506	93,569	154,776



233 Park Avenue South #201
Minneapolis, MN 55415
Sherman-Associates.com

Contact

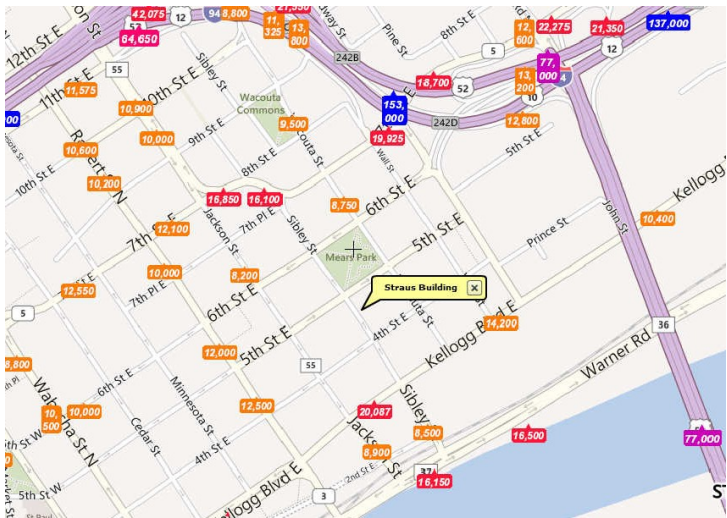
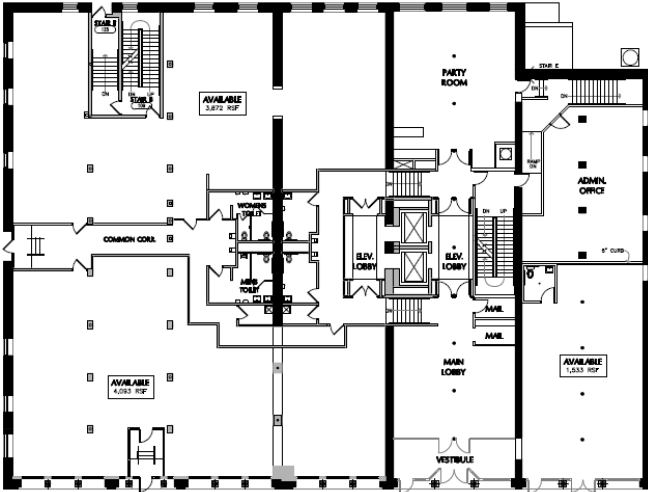
Rob Kost
(612) 868-1868
rkost@Sherman-Associates.com



FOR LEASE

Straus Building

350 Sibley Street
St Paul, MN 55105



This project was the result of a complete renovation/restoration with new mechanicals as well as restored facade. The historic Straus Building has commercial space on the first floor with residential above. The commercial space is well suited for both office or retail space. A new tenant will have a great space to work from, by utilizing the very high ceilings and arched windows.

Contact



Rob Kost
(612) 868-1868
rkost@Sherman-Associates.com