

# FOR LEASE

## Rayette Building

261 E Fifth Street  
St Paul, MN 55101



## 2,500 SF Available

### Demographics

	<u>1 Mile</u>	<u>3 Miles</u>	<u>5 Miles</u>
Population	13,282	158,193	337,329
Households	6,518	59,018	132,711
Avg HH Inc.	\$43,002	\$50,537	\$60,339
Daytime Pop.	43,641	158,193	337,329



## Contact

233 Park Avenue South #201  
Minneapolis, MN 55415  
Sherman-Associates.com

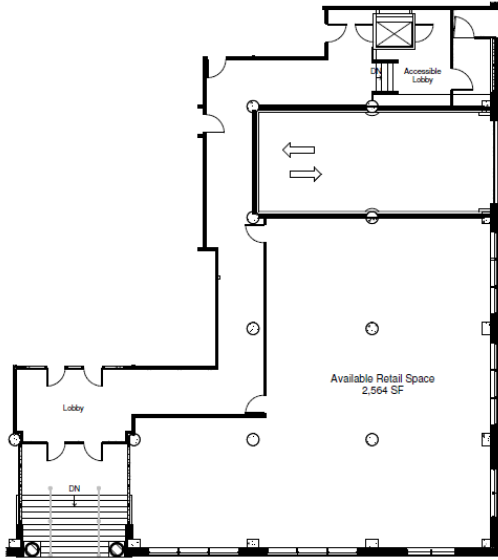
Rob Kost  
(612) 868-1868  
rkost@Sherman-Associates.com



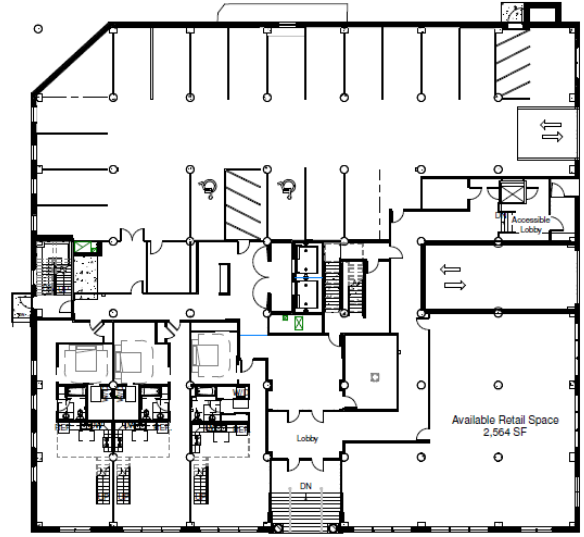
# FOR LEASE

## Rayette Building

261 E Fifth Street  
St Paul, MN 55101



E 5th STREET



E 5th STREET

About 2,500 SF of first level retail available on the corner.



One block from Union Depot METRO Green Line Light Rail Transit Station.

## Contact



Rob Kost  
(612) 868-1868  
rkost@Sherman-Associates.com