

FOR LEASE

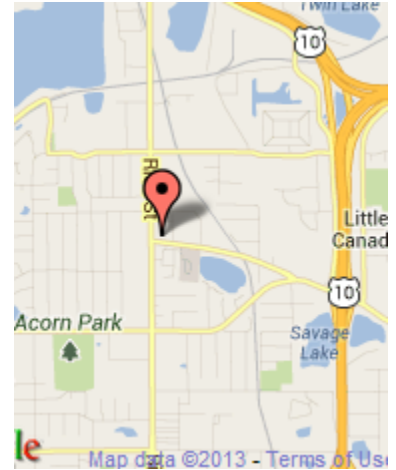
Lodge at Little Canada

2800 Rice Street

Little Canada, MN 55117



14,000 SF total



Demographics

	<u>1 Mile</u>	<u>3 Miles</u>	<u>5 Miles</u>
Population	9,434	72,123	227,997
Households	4,474	29,555	86,898
Avg HH Inc.	\$67,675	\$72,620	\$68,072
Daytime Pop.	5,245	27,746	128,660



Contact

233 Park Avenue South #201
Minneapolis, MN 55415
Sherman-Associates.com

Rob Kost
(612) 868-1868
rkost@Sherman-Associates.com



FOR LEASE

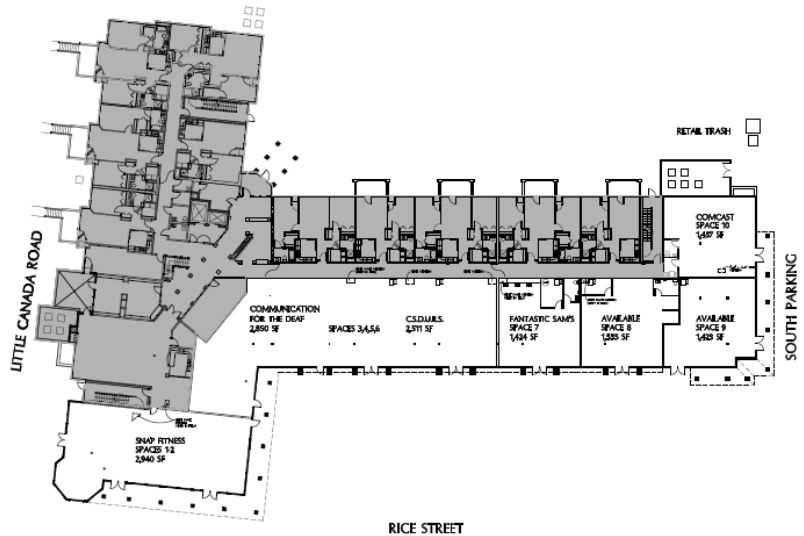
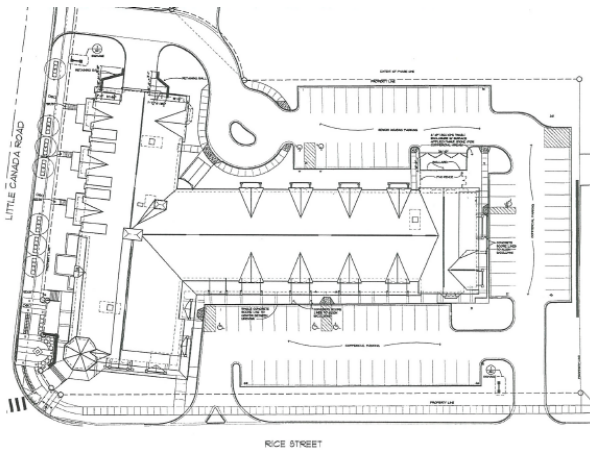
Lodge at Little Canada

2800 Rice Street

Little Canada, MN 55117



This beautiful retail center is part of a senior housing complex and of Little Canada's redevelopment area--which has new senior housing, townhouses, rental housing, general retail, banking and restaurants. It is in the center of activity on Rice Street with great access off of I-35E, Hwy 36 and I-694. The city has added new infrastructure including street lamps, landscaping, pavers, flags and other design elements. There are ponds and fountains nearby which is part of the expanding city park.



Contact



Rob Kost

(612) 868-1868

rkost@Sherman-Associates.com