

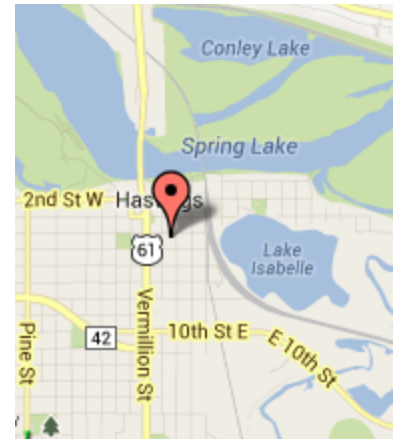
FOR LEASE

Guardian Angels

208 4th Street East
Hastings, MN 55033



5,225 SF Available



Demographics

	<u>1 Mile</u>	<u>3 Miles</u>	<u>5 Miles</u>
Population	5,147	25,308	29,741
Households	2,076	9,992	11,630
Avg HH Inc.	\$66,467	\$72,316	\$73,975
Daytime Pop.	2,417	9,222	10,701

Contact

233 Park Avenue South #201
Minneapolis, MN 55415
Sherman-Associates.com

Rob Kost
(612) 868-1868
rkost@Sherman-Associates.com



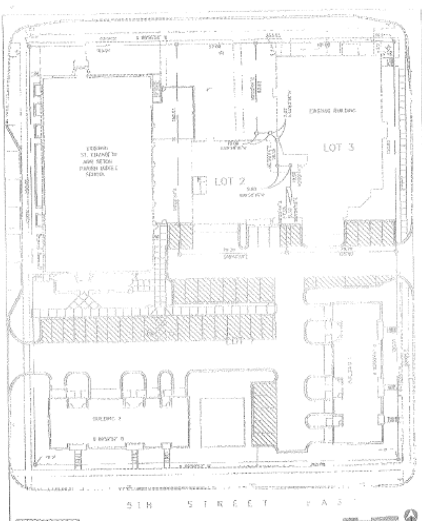
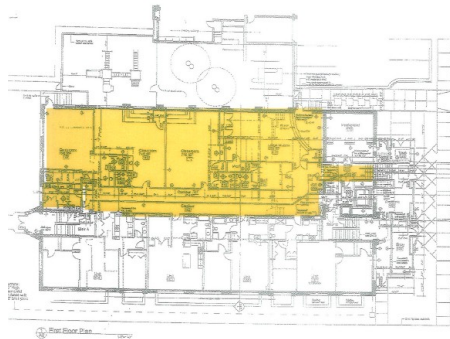
FOR LEASE

Guardian Angels

208 4th Street East
Hastings, MN 55033



This mixed use building is located in the beautiful river town of Hastings, Minnesota in the former Guardian Angels Catholic School on the corner of 4th St E and Ramsey across from a public parking lot and City Hall. With the onsite playground, this site would be perfect for a daycare, charter or private school. Other possible uses would be for general office or medical use.



Contact

Rob Kost
(612) 868-1868
rkost@Sherman-Associates.com