

FOR LEASE

Grande Market Place

12700 Nicollet Avenue S.
Burnsville, MN 55337

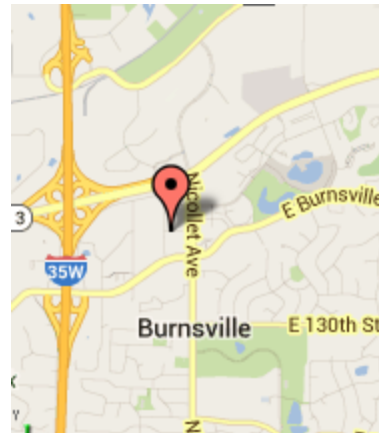


3,100 SF Available



Demographics

	<u>1 Mile</u>	<u>3 Miles</u>	<u>5 Miles</u>
Population	9,273	66,526	183,383
Households	4,266	26,465	72,453
Avg HH Inc.	\$74,435	\$85,149	\$85,309
Daytime Pop.	4,776	29,527	73,026



233 Park Avenue South #201
Minneapolis, MN 55415
Sherman-Associates.com

Contact

Rob Kost
(612) 868-1868
rkost@Sherman-Associates.com



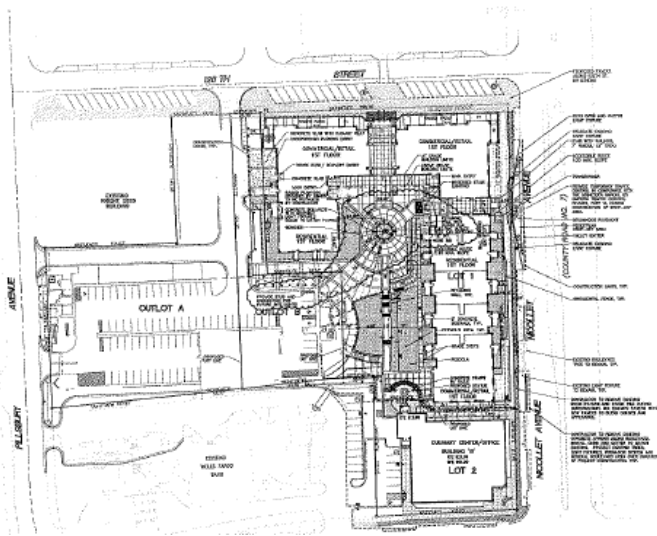
FOR LEASE

Grande Market Place

12700 Nicollet Avenue S.
Burnsville, MN 55337



Grande Market Place a beautiful mixed-use project in the center of Burnsville. It is in the Heart of the City Park and kitty-corner from the new Burnsville Performing Arts Center. Cub Foods is across the street and there is a new CVS under construction. There are only a couple of remaining office/retail vacancies.



Traffic Counts

15,600 on Nicollet Avenue and
16,400 on Burnsville Parkway

Contact



Rob Kost
(612) 868-1868
rkost@Sherman-Associates.com