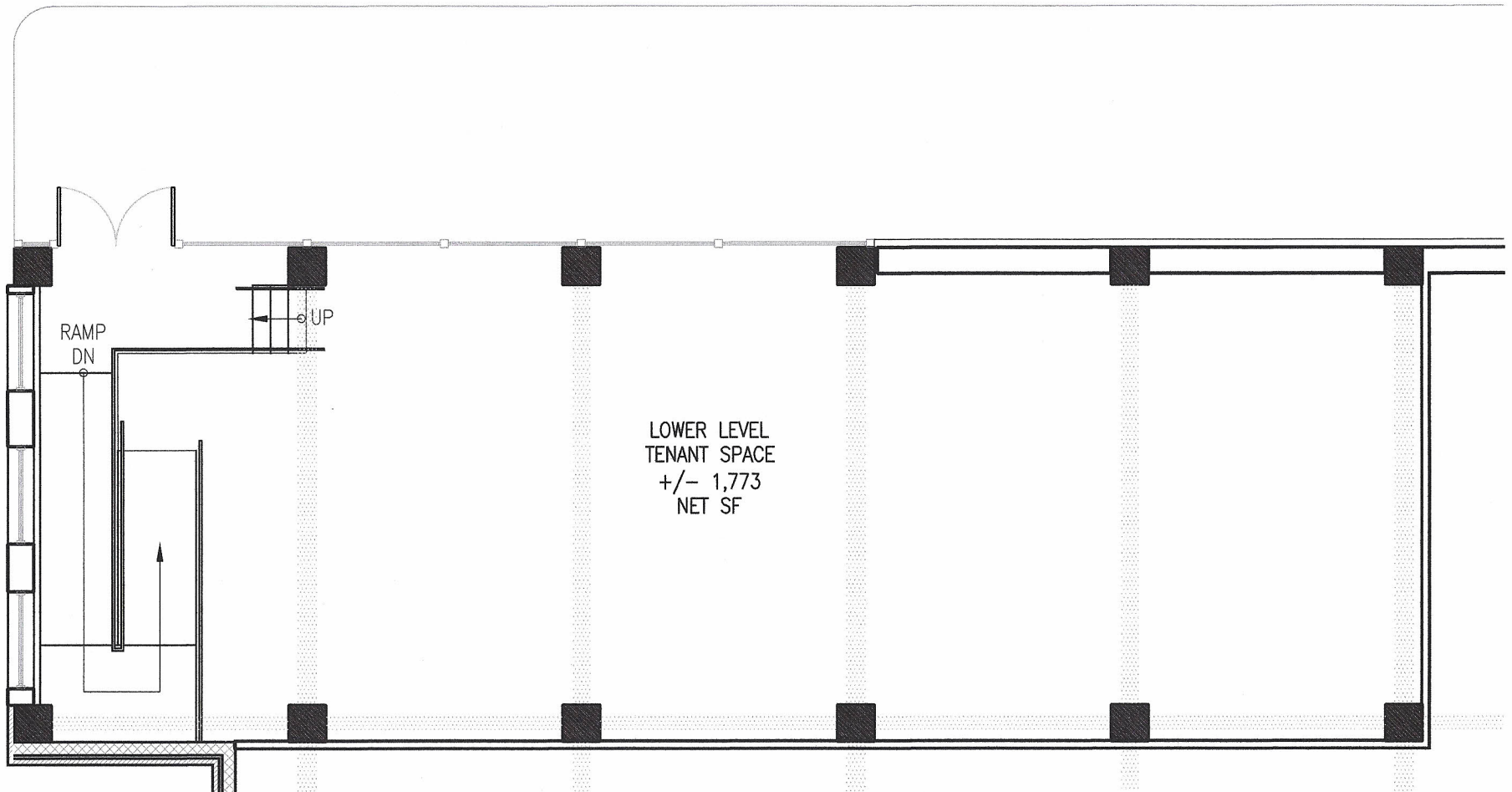



10TH STREET



 <p><b>ROSEMANN &amp; ASSOCIATES, P.C.</b> architecture interior design engineering planning</p>	<b>LOWER LEVEL TENANT SPACE</b>		REVISION	PROJECT NO.
	SHEET REF: N/A	<b>GRAND BOULEVARD TENANT SPACE</b> 1000 GRAND BLVD KANSAS CITY, MO	DATE: 09/23/2013	
	SCALE: 1/8" = 1'-0"			

