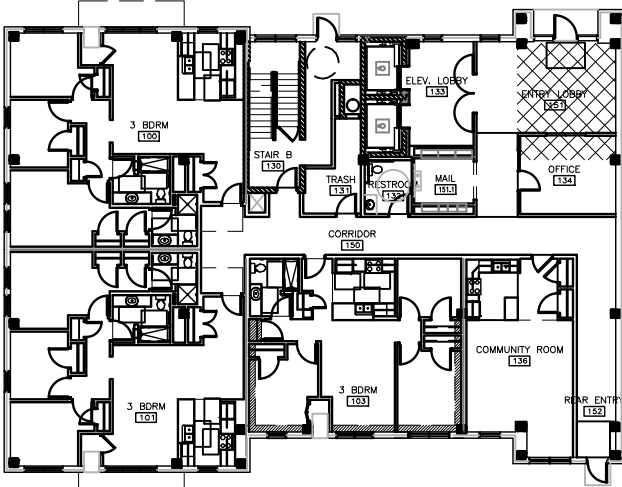
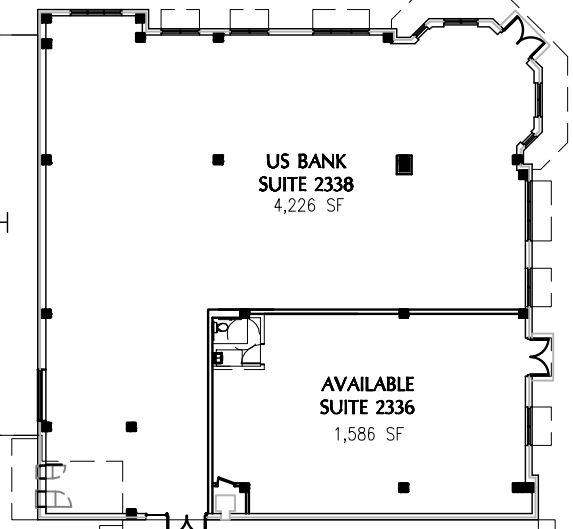


24TH AVENUE



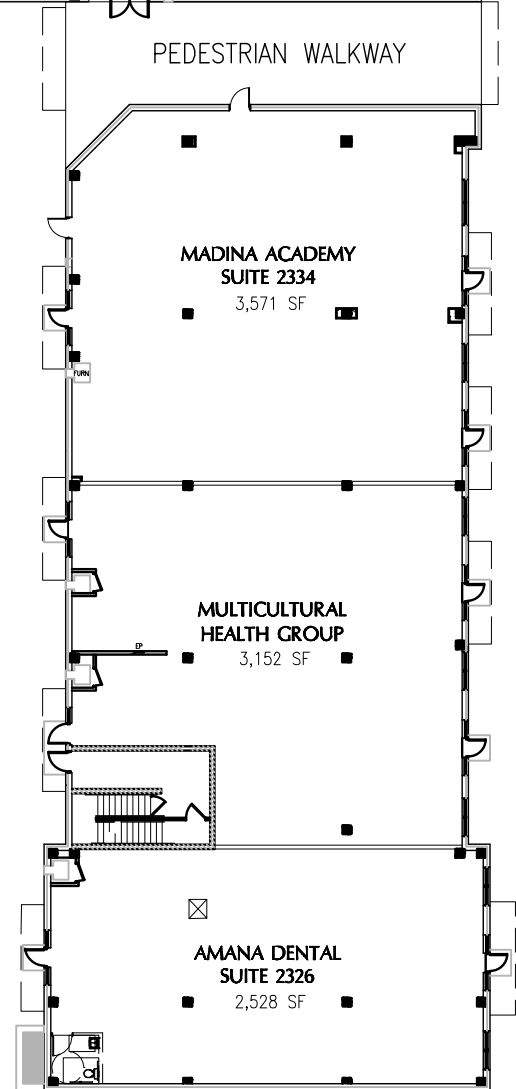
RESIDENTIAL UNITS

DRIVE THROUGH



PEDESTRIAN WALKWAY

PARKING



CENTRAL AVENUE NE

**Mohagen
Hansen
Architectural
Group**



1000 Twelve Oaks Center Dr.
Suite 200
Wayzata MN 55391
Tel 952.426.7400
Fax 952.426.7440
www.mohagenhansen.com

SCALE: NOT TO SCALE
DATE: 3/9/2012
PROJECT NO.: 12075.0SHR
DRAWN BY: P. CARR
COMPUTER PATH: JOBS\CENTRAL AVE\MARKETING-PLNS\CENTRL_LOFTS

SHEET DESCRIPTION:
**CENTRAL AVENUE LOFTS
MINNEAPOLIS, MN**
SHERMAN ASSOCIATES

SHEET NUMBER:
A1