

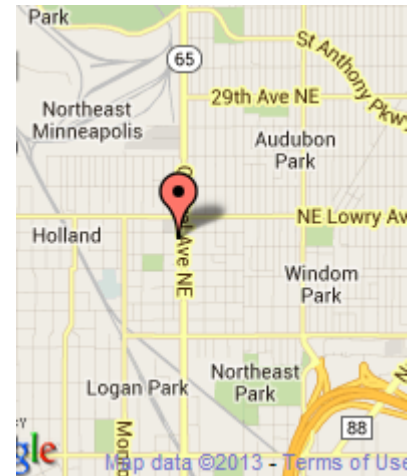
FOR LEASE

Central Avenue Lofts

2388 Central Avenue NE
Minneapolis, MN 55418



15,063 SF total



Demographics

	<u>1 Mile</u>	<u>3 Miles</u>	<u>5 Miles</u>
Population	21,101	141,962	394,952
Households	9,372	58,233	165,037
Avg HH Inc.	\$59,734	\$58,870	\$64,101
Daytime Pop.	13,447	160,321	281,512

Contact

233 Park Avenue South #201
Minneapolis, MN 55415
Sherman-Associates.com

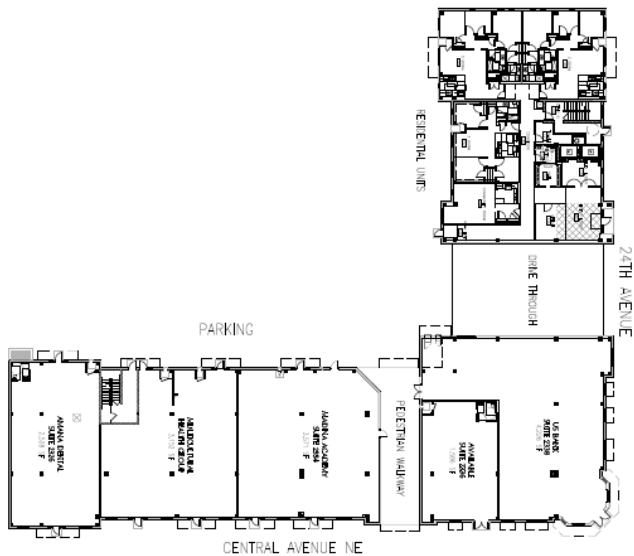
Rob Kost
(612) 868-1868
rkost@Sherman-Associates.com



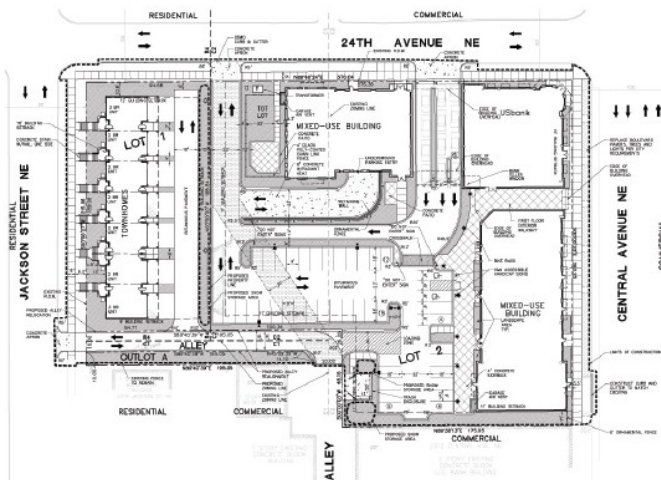
FOR LEASE

Central Avenue Lofts

2388 Central Avenue NE
Minneapolis, MN 55418



This commercial/retail space is part of a mixed-use project which includes a US Bank, Medina Academy daycare, dentist, multicultural primary care clinic, apartments and future residential townhouses. It has great visibility and is close to all area amenities such as shopping and restaurants. Traffic counts are 15,000 VPD. The property is 100% occupied.



Contact



Rob Kost
(612) 868-1868
rkost@Sherman-Associates.com