

FOR SALE

42nd Avenue Office Building

1206 42nd Ave North
Minneapolis, MN 55412



4,095 SF total



	Demographics		
	<u>1 Mile</u>	<u>3 Miles</u>	<u>5 Miles</u>
Population	18,340	142,706	358,100
Households	6,391	53,173	148,758
Avg HH Inc.	45,711	46,684	52,253
Daytime Pop.	2,954	39,595	226,207



Contact

Rob Kost
(612) 868-1868
rkost@Sherman-Associates.com

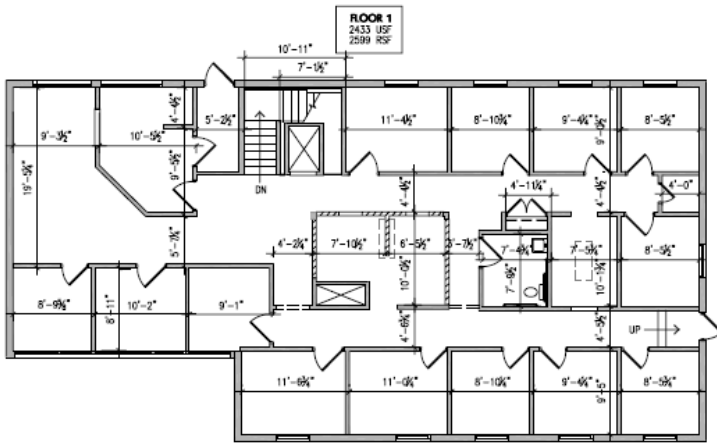
233 Park Avenue South #201
Minneapolis, MN 55415
Sherman-Associates.com



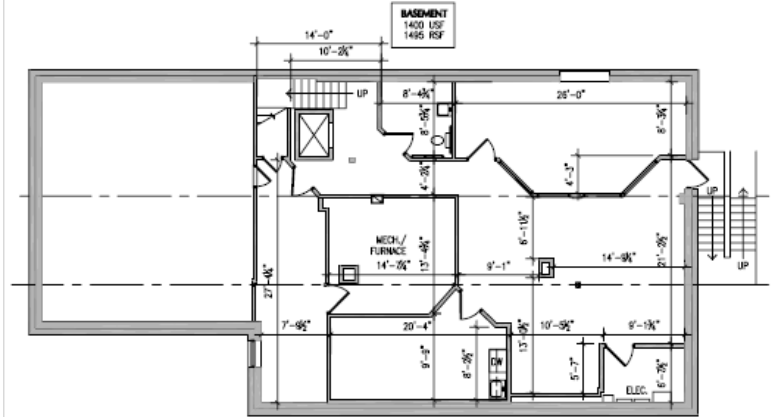
FOR SALE

42nd Avenue Office Building

1206 42nd Ave North
Minneapolis, MN 55412



1 FLOOR 1 PLAN
A21 NOT TO SCALE



1 BASEMENT FLOOR PLAN
A20 NOT TO SCALE



Building Amenities

- 24-hour emergency maintenance
- Concrete floors and walls
- Controlled Access Parking
- Fire sprinkler
- Handicapped accessible

Contact



Rob Kost
(612) 868-1868
rkost@Sherman-Associates.com